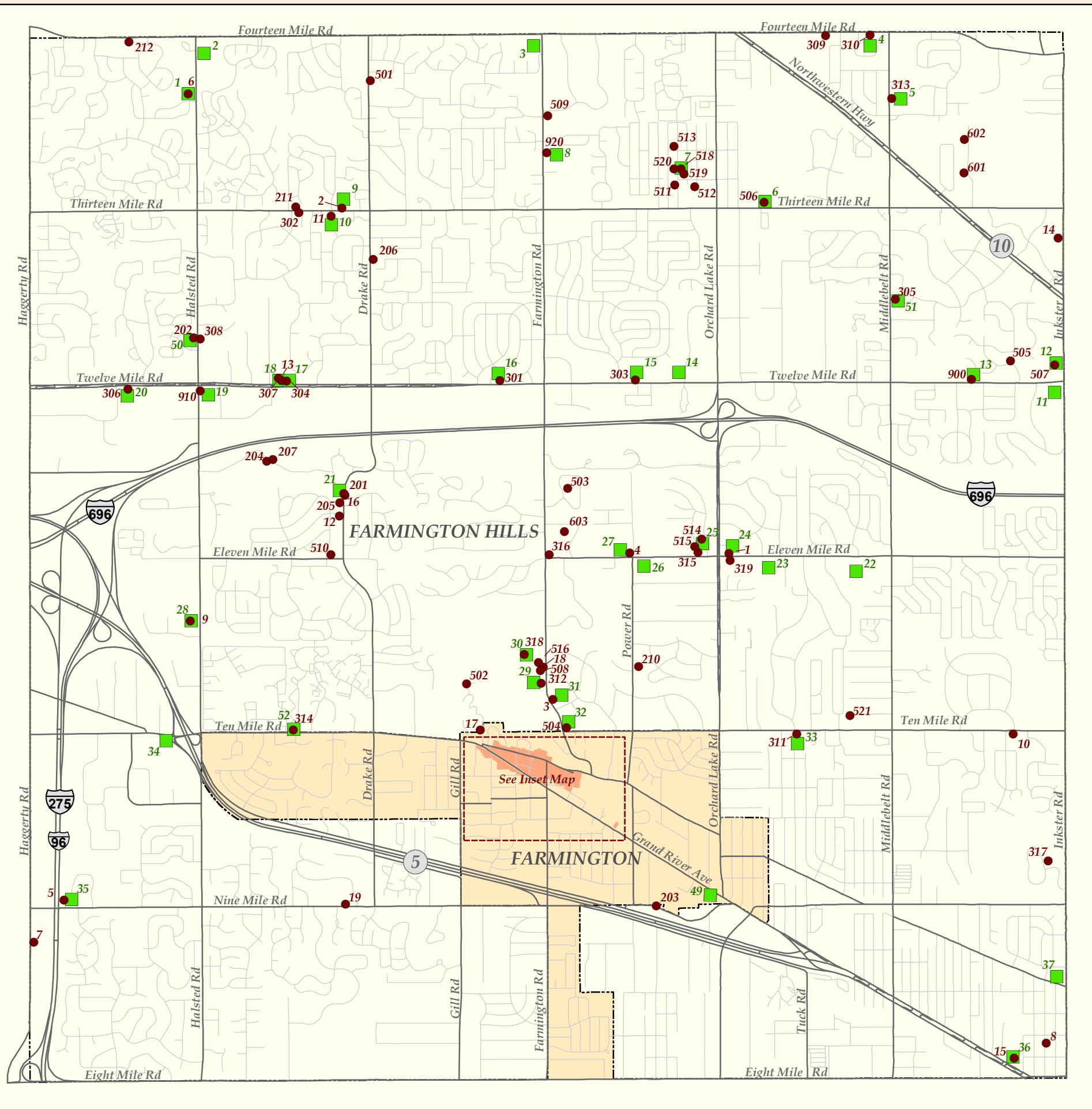


Historic Farmington & Farmington Hills Settled 1825



Farmington Hills Historic Districts

Greek Revival Buildings

1. Royal Aldrich House
2. John Garfield House
3. Lemuel Botsford House
4. Philbrick Tavern
5. Stephen Yerkes - Rogers House
6. Theron Murray House
7. David Simmons House
8. Clarenceville Blacksmith House
9. Universalist Unitarian Church
10. Silas Green House
11. Eber Durham House
12. Stephen Jennings House
13. John Dallas Harger House
14. Cornelius Davis Home
15. Botsford Inn
16. Mark Arnold House
17. Orville Sherman House
18. Palmer Sherman House
19. Alonzo Sprague House

Farmhouses - 1860 to 1900

301. Lawrence Simmons House
302. Myron Crawford House
303. Samuel Davis House
304. John Pettibone House
305. Eli Stodgell House
306. Michael Marlett - Charles Wixom House
307. Hamilton Jones House
308. The Halsted Apple Barn
309. The Cooney House
310. Ward Eagle House
311. John Glick Home & Pottery
312. Sherman - Goodenough House
313. The Fractional School
314. William Gates House
315. Samuel Locke House
316. The Ledyard-Cowley House
317. The Franklin Comstock House
318. The Barn at Heritage Park
319. Bade Hired Man's House

Other Buildings - Post 1900

501. Springbrook Farmhouse
502. Marcus Burroves House
503. The Edward Moseman House
504. Kirby White House
505. Richard Cudmore House
506. Glen Oaks Country Club
507. Sarah Fisher House
508. Spicer House
509. The Howard House
510. Frank Steele House
511. Edward Beals House
512. Oaklands Sub Model House
513. Henry Bach House
514. James Cain House
515. Pasadena Park Bungalow
516. Spicer House Stables
518. Edward Chene House
519. Gould House
520. Archibald Jones House
521. Lambert Sellers Barn
601. Jack Beckwith House
602. Arthur Beckwith House
603. Carl Licht House

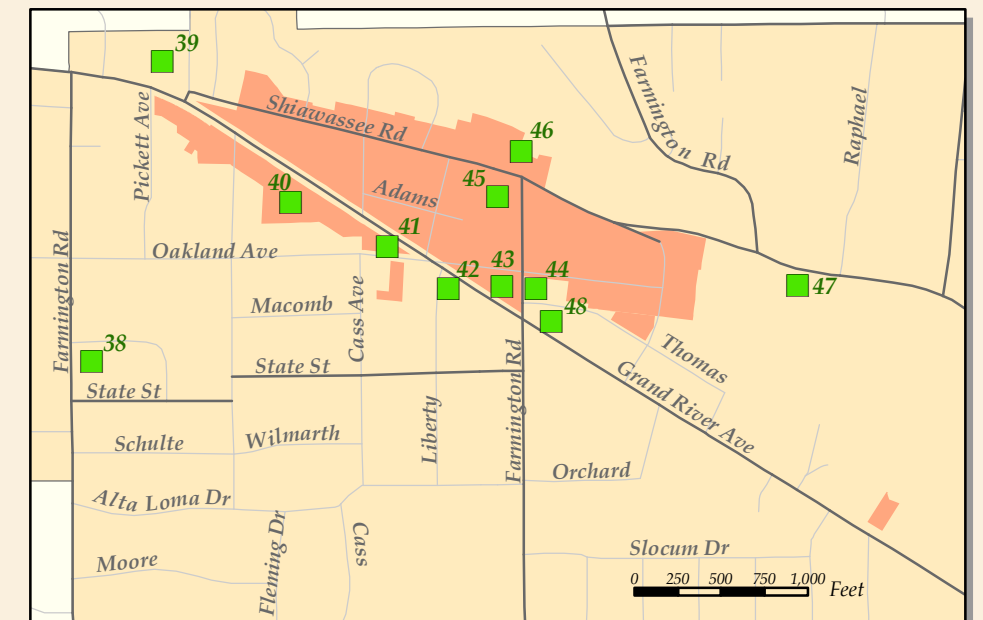
Historic Sites

900. East Farmington Cemetery
910. West Farmington Cemetery
920. North Farmington Cemetery

Pre-Civil War Buildings

201. The Miller's House
202. Boorn - Halsted House
203. The Parsonage
204. Eri Prince House
205. Elliot Sprague House
206. The Drake House
207. Nehemiah Hoyt House
210. Dennis Conroy House
211. John Cox House
212. Addis Emmett Green House

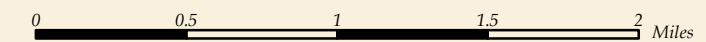
Farmington Historic District



Inset Map of Downtown Farmington

Historic Marker Sites

1. Theron Murray House
2. Minnow Pond
3. North Farmington
4. Ward Eagle Home
5. Fractional District School
6. Glen Oaks
7. The Chene House
8. North Farmington Cemetery
9. John Garfield House
10. Eber Durham House
11. Buckhorn Corners
12. St. Vincent & Sarah Fisher Center
13. The Utley Cemetery
14. McCabe Funeral Home
15. Samuel Davis House
16. Lawrence Simmons House
17. The Pettibone House
18. The Harger House
19. West Farmington Cemetery
20. Charles Wixom House
21. Sleepy Hollow
22. Nardin Park United Methodist Church
23. Freedom Acres
24. Aldrich House
25. Pasadena Park
26. Where Farmington Began
27. The Philbrick Tavern
28. Universalist Church
29. The Longacre House
30. Spicer House
31. Lemuel Botsford House
32. Kirby White House
33. The Plum House
34. The Walker/Wixom Tavern
35. Stephen Yerkes Rodgers House
36. The Botsford Inn
37. Shiawassee Indian Trail
38. Quaker Burial Ground
39. Oakwood Cemetery
40. Governor Fred M. Warner
41. City of Farmington Original Historic District
42. First Quaker Meeting
43. Farmington Masonic Temple and Township Hall
44. Heeney - Sundquist Funeral Home
45. Farmington's First Post Office
46. The Village Center
47. The Potawatomi Indians of Farmington
48. Farmington's Disastrous Fire
49. Detroit United Railway
50. Boorn-Halsted House
51. Eli Stodgell House
52. William Gates House



SOURCE: City of Farmington Hills GIS, 2018

