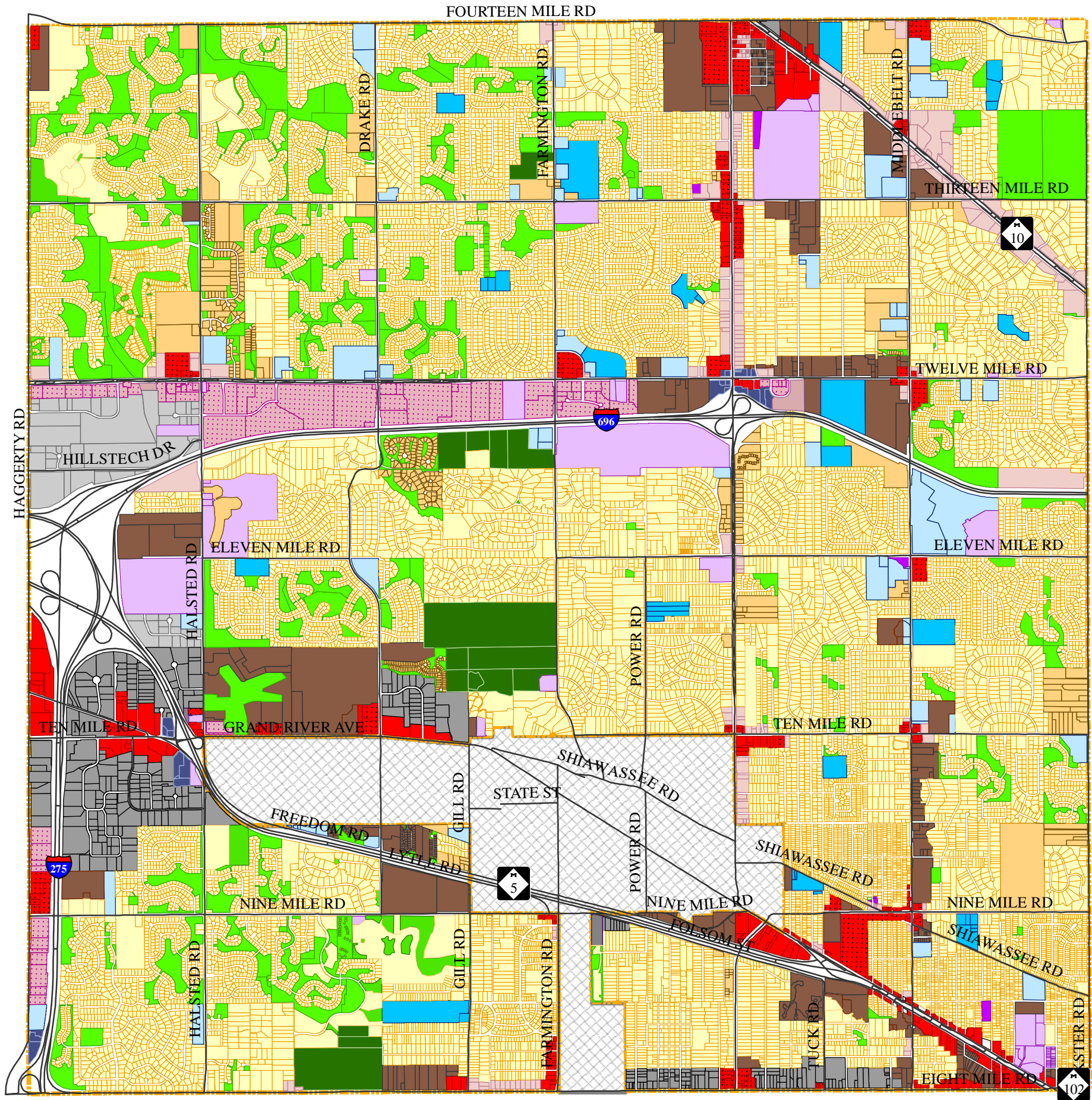


Master Plan for Future Land Use



Master Plan

- Single-Family Residential
- Single-Family Cluster
- Multiple-Family Residential
- Non-Center Type Business
- Shopping Center Type Business
- Expressway Service
- Small Office
- Large Office
- Industrial-Research Office
- Industrial
- Private Recreation
- Major Park
- Neighborhood Park
- Community Facilities
- Quasi-Public
- School
- City of Farmington



I hereby certify that on January 15, 2009 the City of Farmington Hills Planning Commission formally adopted this Future Land Use Map and accompanying text, maps, and charts, all of which are referenced in the City of Farmington Hills "Master Plan for Future Land Use 2009," adopted pursuant to applicable planning laws of the State of Michigan.

/s/ Joseph Mantey _____ /s/ John Young _____
 Joseph Mantey, Chairman John Young, Secretary

SOURCE: City of Farmington Hills, Division of Planning, January 15th 2009.

This plan is intended to show generalized land use and is not intended to indicate precise size, shape, or dimension. These proposals reflect future land use recommendations and do not necessarily imply short range rezoning proposals.