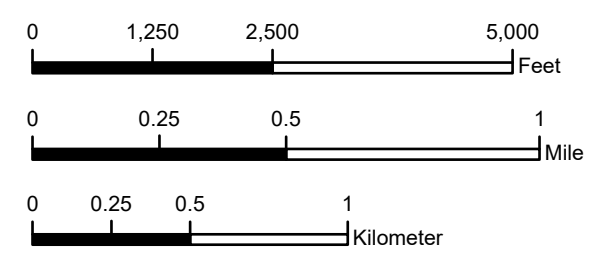
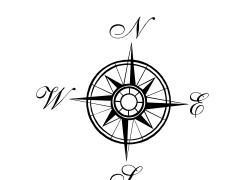
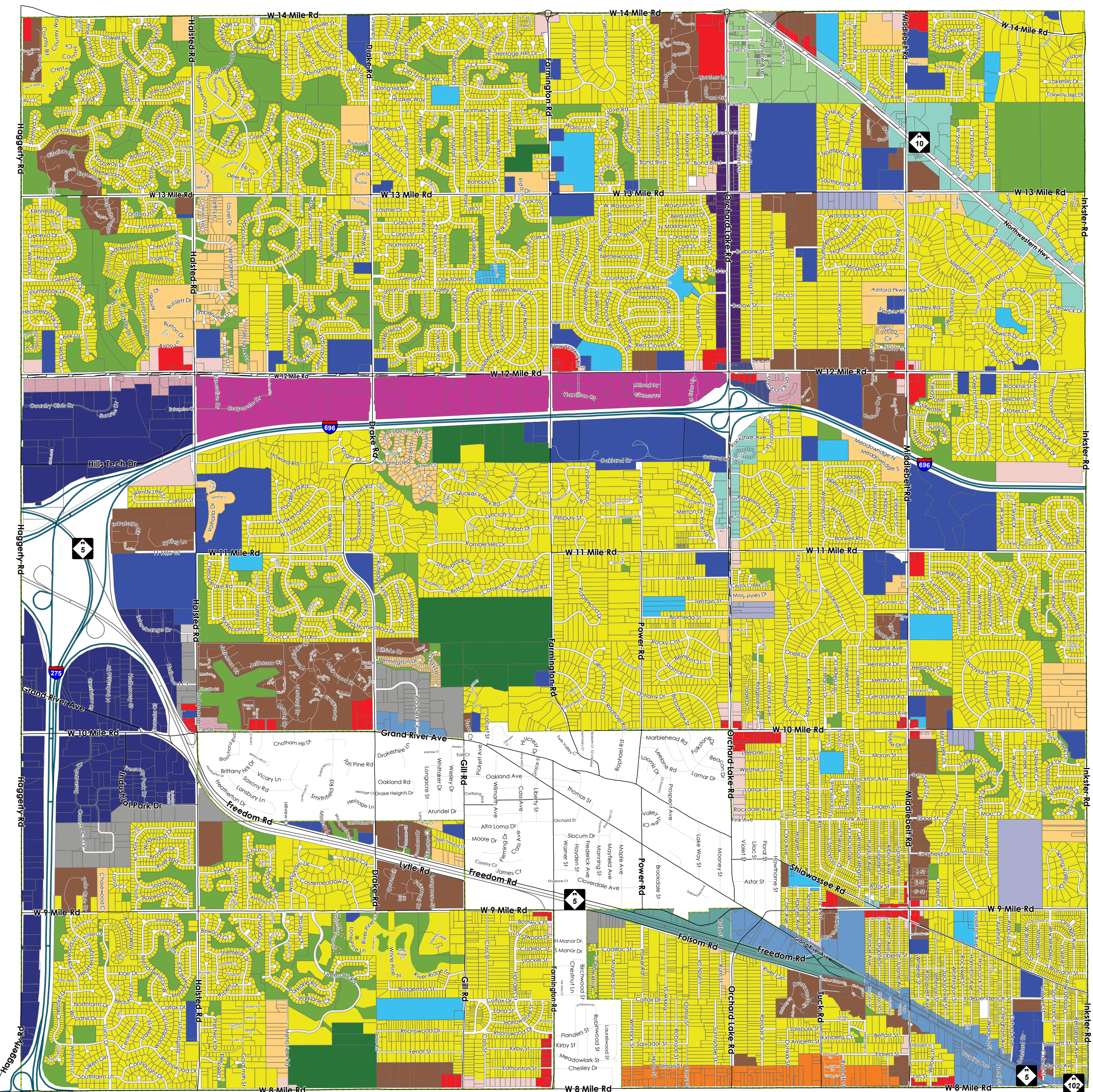


2024 Future Land Use Plan

City of Farmington Hills, Michigan

- 12 Mile Mixed Use
- 14 Mile Mixed Use
- 8 Mile Industrial
- Commercial
- Expressway Service
- Flex Overlay
- Flex Residential
- Flex Residential/Office
- Freeway Redevelopment
- Grand River Corridor
- Industrial
- Industrial-Research
- Institutional
- Large Office
- M-5
- Multi-Family Residential
- Orchard Lake Rd Corridor
- Park
- Private Recreation
- School
- Single-Family Cluster
- Single-Family Residential
- Small Office



SOURCES: City of Farmington Hills, GIS 2024
 Department of Planning and Community Development, 2024
 Oakland County, 2024

DISCLAIMER: Although the information provided by this map is believed to be reliable, its accuracy is not warranted in any way. The City of Farmington Hills assumes no liability for any claims arising from the use of this map.